



MEON VIEW

WEST MEON

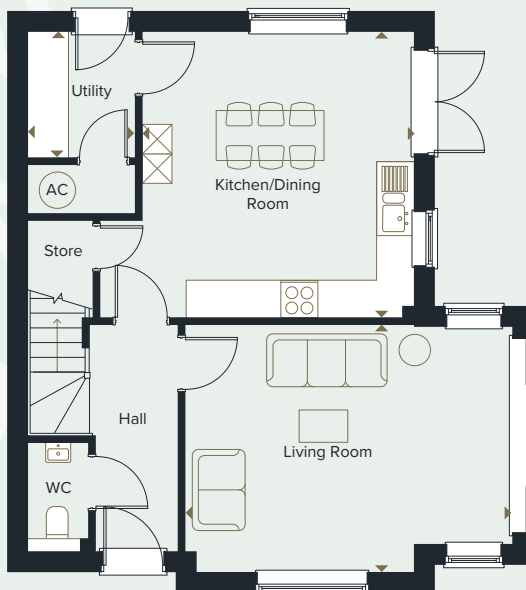
HOME 7

3 BEDROOMS | SEMI-DETACHED



SPECIFICATION HIGHLIGHTS:

- Fully fitted handleless designer kitchen with stone worksurface
- NEFF black glass induction hob with 4 heating zones
- Flooring included
- Wardrobes to master bedroom
- Detached garage with grass topped roof



GROUND FLOOR

KITCHEN / DINING ROOM

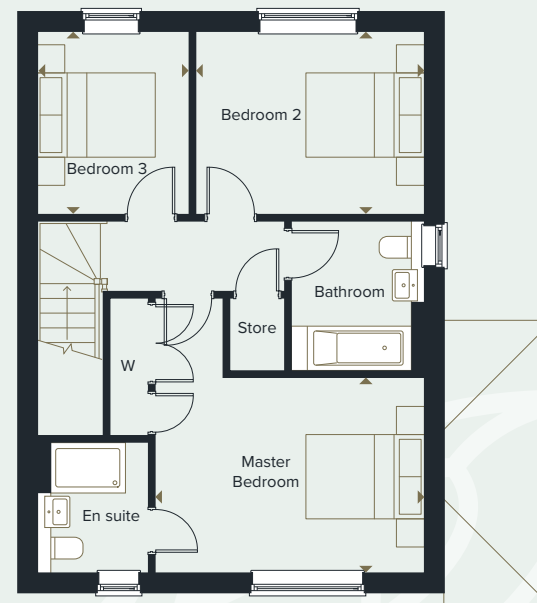
5500mm x 3900mm 18' 1" x 12' 10"

UTILITY ROOM

2000mm x 1700mm 6' 7" x 5' 7"

LIVING ROOM

4600mm x 4450mm 15' 1" x 14' 7"



FIRST FLOOR

MASTER BEDROOM

4300mm x 3100mm 14' 1" x 10' 2"

BEDROOM 2

3600mm x 2900mm 11' 10" x 9' 6"

BEDROOM 3

2900mm x 2400mm 9' 6" x 7' 10"

Meon View, Long Priors, West Meon, GU32 1JA

sales@metishomes.co.uk

01962 893545

The items within this specification are for guidance only and may be substituted at any time. Floorplans shown are for approximate measurements only. Exact layout and sizes may vary. All measurements may vary within a tolerance of 5%. The information in this document is indicative and is intended to act as a guide only as to the finished product. Accordingly, due to our policy of continuous improvement, the finished product may vary from the information provided. These particulars should not be relied upon as accurately describing any of the specific matters described by any order under the Property Misdescriptions Act 1991. This information does not constitute a contract, or warranty. The dimensions given on plans are subject to minor variations and are not intended to be used for carpet sizes, appliance sizes or items of furniture. Applicants are advised to contact selling agent to ascertain the availability of any property. Computer generated illustrations indicative only. Please check with a member of the Metis Homes team for the latest information.

METIS HOMES

Modern Homes. Traditional Values.

